



Bright
Sungshin

SUNGSHIN
WOMEN'S UNIVERSITY

나를 찾는 곳,
내가 되는 곳

KOREAN UNIVERSITY WITH 2 CAMPUSES IN SEOUL(CAPITAL CITY OF KOREA)

Sungshin Women's University is located in the central downtown area of Seoul, the capital of Republic of Korea. The main campus is near many attractions, such as Myeongdong, Dongdaemun, Daehak-ro and Seoul station. One unique fact about Sungshin is that we have two campuses located in Seoul, within 5 kilometers distance.

SOOJUNG CAMPUS

- College of Humanities
- College of Social Sciences
- College of Law
- College of Natural Sciences
- College of Education
- College of Arts
- College of Music
- College of General Education



2

WOONJUNG GREEN CAMPUS



- College of Knowledge-Based Services Engineering
- College of Nursing Science
- Health & Wellness College
- International College of Beauty and Living Industry
- College of Convergence Culture and Arts

ATTRACTIVE PLACES TO VISIT IN SEOUL

As the capital of the Republic of Korea, Seoul is the central hub of politics, economics, society, culture, and communication. Centered around the Han River, Seoul is a city of coexistence between people and nature, as well as tradition and high-tech innovation. This city, with over 600 years of history, is home to numerous historical sites and attractions. Famous places of interest are easy to reach from Sungshin Women's University.



ACCESSIBLE TRANSPORTATION



- From Incheon International Airport to Sungshin Women's University, it takes about 1.5 hour by car or airport limousine bus and 2 hours by subway.
- From Gimpo International Airport, it takes about 1 hour by car or airport limousine bus and 1.5 hours by subway.



- You can easily access Subway line 4, which is 5-minute walking distance from campus ("Sungshin Women's University" station for Soojung Campus, "Mia" station for Woonjung Green campus). Both campuses are 3 subway stations away from each other.
- Riding the new "Ui Rail Train" will take you to Bukhansan Mountain.



Bus station is just 5-minute walking distance away. Over 40 bus lines, airport limousine buses and Late-night shift buses(N-bus) are available.



You can take a walk by the Seongbukcheon(stream) and park nearby, or within 10-minute walk you can get to restaurants, shops and movie theatre near campus.

HISTORY OF SUNGSHIN

1936

04.28

Dr. Sook-Chong Lee establishes Sungshin Girl's School.



1963

12.16

Certification for Part I of Sungshin Junior Business College is obtained.

1965

03.01

Sungshin Teachers College is established.

1972

01.28

Certification for the opening of the Graduate School is obtained.



2006

11.29

Sungshin Women's University takes over the National Medical Center College of Nursing.

1981

07.01

Sungshin Women's College is promoted to a four-year university status and renamed Sungshin Women's University.



2011

03.01

Woonjung Green Campus opens.

2013

09.02

The Korea-China Joint Major Program is established in association with China's Hebei University of Science and Technology and Shandong Youth University of Political Science.



2017

12.28

Sungshin Women's University attains 'Accreditation for Higher Education' in 2017 by the Korean University Accreditation Institute.

2015

09.10

Sungshin Women's University opens the King Sejong Institute in Shijiazhuang, China.



2018

07.02

Professor Yang, Bo Kyung is inaugurated as the 11th University President.



2019

04.28

The 83rd anniversary of the foundation of Sungshin Girl's School and the 54th anniversary of the opening of Sungshin Women's University are celebrated.



UNIVERSITY QUICK FACTS

ACADEMIC PROGRAMS

UNDERGRADUATE

12 COLLEGES



52 MAJORS



GRADUATE

Master's Degree Programs

62 MAJORS

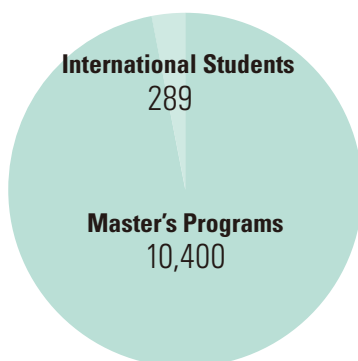
Doctoral Degree Programs

55 MAJORS

ENROLLMENT [2018]

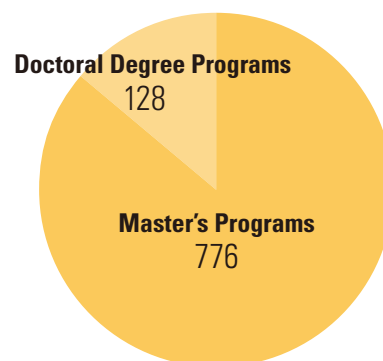
UNDERGRADUATE

10,689



GRADUATE

904



UNDERGRADUATE COLLEGES

12 COLLEGES

52 DEPARTMENTS

COLLEGE	DEPARTMENT
College of Humanities	Department of Korean language and Literature Department of English language and Literature Department of German Language, Literature and Culture Department of French Language, Literature and Culture Department of Japanese Language, Literature and Culture Department of Chinese Language, Literature and Culture Department of History
College of Social Sciences	Department of Political Science and Diplomacy Department of Psychology Department of Geography Department of Economics Department of Business Administration Department of Media Communication
College of Law	Department of Law Department of Knowledge-Based Industry and Law
College of Natural Sciences	Department of Mathematics Department of Statistics Department of Chemistry
College of Knowledge-Based Services Engineering	Department of Computer Engineering Department of Information System Engineering Department of Convergence Security Engineering Department of Services and Design Engineering Department of Food Science and Biotechnology Department of Biotechnology Department of Environment & Energy Engineering
Health & Wellness College	Department of Sports and Leisure Department of Exercise Rehabilitation Welfare Department of Global Medical Science Department of Social Welfare Department of Food and Nutrition
International College of Beauty and Living Industry	Department of Beauty Industry Department of Global Business Department of Fashion Industry Department of Consumer Science and Living Culture Industry
College of Education	Department of Education Department of Social Studies Education Department of Ethics Education Department of Chinese Classics Education Department of Early Childhood Education
College of Arts	Department of Oriental Painting Department of Western Painting Department of Sculpture Department of Crafts Department of Industrial Design
College of Music	Department of Vocal Music Department of Instrumental Music Department of Composition
College of Nursing Science	Department of Nursing Science
College of Convergence culture and arts	Department of Culture & Art Management Department of Acting for Visual Media Department of Contemporary Music Department of Dance Art
College of General Education	Department of General Education

GRADUATE COLLEGES

62 MASTER'S DEGREE PROGRAMS

50 DOCTORAL DEGREE PROGRAMS

COURSE	DIVISION	DEPARTMENT(MAJOR)	
Master's Degree	Humanities	Department of Korean Language and Literature(including Korean Language Culture Education Major)	
		Department of English Language and Literature	
		Department of French Language and Literature	
		Department of Chinese Language and Literature	
		Department of History	
		Department of Law	
		Department of Psychology	
		Department of Economics	
		Department of Education	
		Department of Early Childhood Education	
	Department of Social Welfare		
	Natural Sciences	Department of Mathematics	
		Department of Biology	
		Department of Statistics	
		Department of Clothing & Textiles	
	Engineering	Department of Nursing(including Senior Nursing Program)	
	Engineering	Department of Future Convergence Technology Engineering	
	Arts and Sports	Department of Oriental Painting	
		Department of Sculpture	
Department of Printmaking			
Department of Music(Vocal, Instrumental, Composition Majors)			
Department of Physical Education			
Joint Programs	Department of Music Therapy		
Doctoral Degree	Humanities	Department of Korean Language and Literature	
		Department of German Language and Literature	
		Department of History	
		Department of Law	
		Department of Psychology	
		Department of Economics	
		Department of Education	
		Department of Living Culture and Consumer Science	
		Department of Media Communication	
		Natural Sciences	Department of Chemistry
	Department of Next Generation Applied Sciences		
	Department of Clothing & Textiles		
	Department of Nursing		
	Engineering	Department of Future Convergence Technology Engineering	
	Arts and Sports	Department of Physical Education	
		Department of Art (Oriental Painting, Western Painting, Sculpture, Crafts, Industrial Design, and Multiple Art & Technology Majors)	
		Department of Music (Vocal, Instrumental, Accompanying Music, Composition, and Musicology Majors)	
	Integrated Master/ Doctoral Degree	Humanities	Department of Korean Language and Literature
			Department of German Language and Literature
Department of History			
Department of Law			
Department of Psychology			
Department of Economics			
Department of Education			
Department of Living Culture and Consumer Science			
Department of Media Communication			
Natural Sciences			Department of Chemistry
		Department of Next Generation Applied Sciences	
		Department of Clothing & Textiles	
		Department of Nursing	
Engineering		Department of Future Convergence Technology Engineering	
Arts and Sports		Department of Music (Vocal, Instrumental, Composition Majors)	
Master's Degree		Humanities	Department of English Language and Literature
			Department of Chinese Classics
			Department of the History of Art
			Department of Political Science and Diplomacy
	Department of Geography		
	Department of Business Administration		
	Department of Early Childhood Education		
	Department of Social Welfare		
	Natural Sciences		Department of Biology
			Department of Computer Science
		Department of Food and Nutrition	
		Department of Physical Education	

GRADUATE SCHOOL OF EDUCATION

Master's Degree Department of Education (Korean Language Education Major, English Language Education Major, Mathematics Education Major, Early Childhood Education Major, Fine Arts Education Major, Music Education Major, Counseling Psychology Major, Nutrition Education Major)

GRADUATE SCHOOL OF CONVERGENCE DESIGN AND ARTS

Master's Degree Department of Convergence Beauty (Make-up and Special Effects Make-up Major, Skincare and Obesity Major, Cosmetics Major)

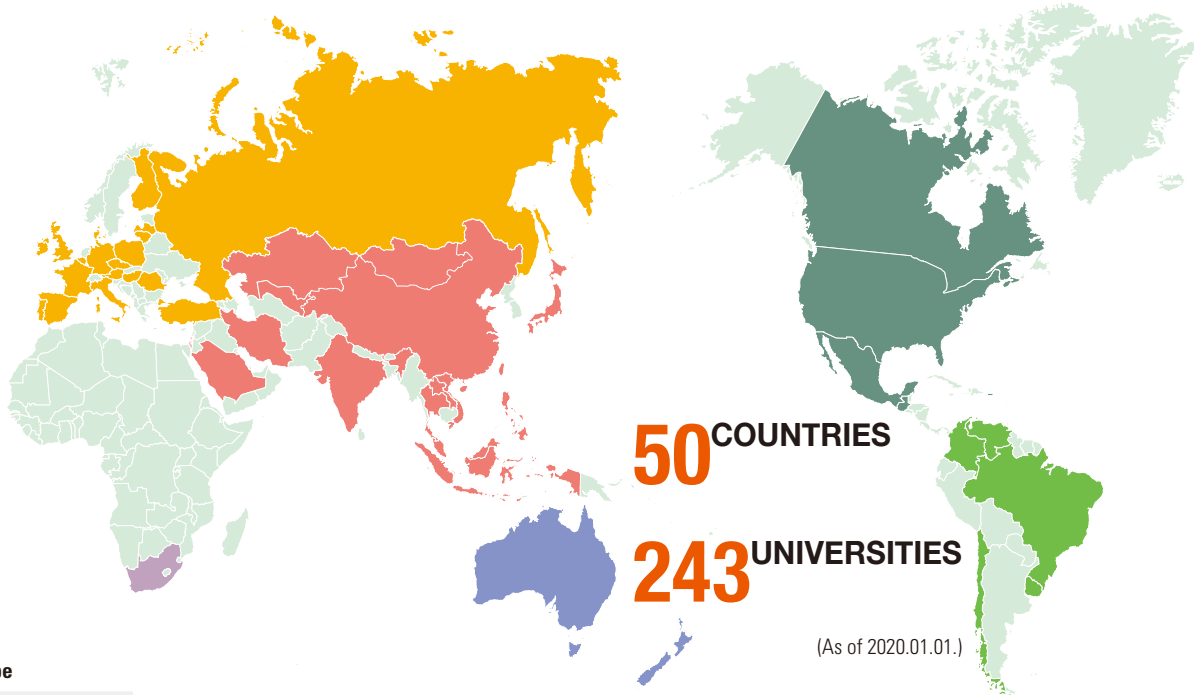
GRADUATE SCHOOL OF CULTURAL INDUSTRY

Master's Degree Department of Cultural Industry and Arts (Aviation Service Management Major, Public Art Major, Korean Cultural Contents Major, Cultural Narrative Contents Creation Major, Entrepreneurship & Cultural Business Major, Performing Arts Major, Expressive Arts Therapy Major)

GRADUATE SCHOOL OF LIFETIME WELFARE

Master's Degree Department of Child Care and Education(Child Care and Education Major) Department of Health and Exercise Management(Health and Exercise Management Major)
Department of Real Estate(Real Estate Management Major)

SUNGSHIN'S GLOBAL PARTNERSHIPS AND NETWORK



Europe

Austria	Universität Wien
Belgium	University of Liege
Czech Republic	Masaryk University University of Ostrava
Denmark	University of Copenhagen
Finland	University of Turku
France	Institut Supérieur de Management et Communication (ISMAC) Université Le Havre Normandie Université Grenoble Alpes Université de Pau et des Pays de l'Adour Collège de Paris Université de Reims Champagne-Ardenne Université de Franche-Comte
Georgia	Georgian-American University
Germany	Universität Kassel Albert-Ludwigs-Universität Freiburg Universität Trier Freie Universität Berlin Aschaffenburg University of Applied Science Katholische Universität Eichstätt-Ingolstadt
Hungary	Tomori Pal College Liszt Ferenc Academy of Music
Ireland	Dublin City University
Italy	Conservatorio di Milano Conservatorio di Musica Umberto Giordano Istituto Europeo di Design, IED University of Foggia Università Europea di Roma Sapienza Università di Roma
Latvia	Ventspils University of Applied Sciences
Lithuania	LCC International University Lithuanian University of Health Sciences
Poland	SWPS University of Social Sciences and Humanities
Portugal	Polytechnic Institute of Porto
Romania	University of Bucharest Romanian-American University
Russia	Far Eastern Federal University Irkutsk State University Sakhalin State University Kazan Federal University Saint Petersburg State University Vladivostok State University of Economics and Service

Spain	Universidad de Salamanca Universidad Católica San Antonio de Murcia
Turkey	Ankara University Nigde Omer Halisdemir University
United Kingdom	University of Portsmouth University of the Arts London Brunel University London Edinburgh Napier University Girton College, Cambridge Saint Mary's University, Twickenham London University of Roehampton

Africa

South Africa	Stellenbosch University
---------------------	-------------------------

Asia

Brunei	Universiti Brunei Darussalam
China	Anhui University of Finance & Economics Central China Normal University China Central Academy of Fine Arts Communication University of China Dalian Nationalities University Dalian University of Foreign Languages East China Normal University East China University of Science and Technology East University of Heilongjiang Eastern Liaoning University Gansu University of Traditional Chinese Medicine Guangdong University of Foreign Studies Guangzhou Academy of Fine Arts Harbin Cambridge University Harbin Engineering University Harbin Institute of Technology (Weihai) Harbin Normal University Harbin University of Science and Technology Hebei Institute of Communication Hebei Normal University Hebei University of Science and Technology Hebei Women's Vocational College Heilongjiang University Hunan Normal University Jilin Animation Institute Jilin Huaqiao Foreign Languages Institute Jilin University Langfang Teachers University Lanzhou University Linyi University

China	Luoyang Institute of Science and Technology Mudanjiang Normal University Nanjing University of Finance and Economics North China Institute of Aerospace Engineering Northeast Normal University Ocean University of China Sandong Youth University of Political Science Shandong Institute of Business and Technology Shandong University at Weihai Shanghai International Studies University Shanghai Normal University Shenzhen University Sichuan Normal University South China Normal University Southwest University Sun Yat-sen University Sun Yat-sen University, Zhuhai United International College(UIC) Xi'an International Studies University Xi'an Polytechnic University Zhangzhou College of Science & Technology Zhejiang Gongshang University Zhejiang International Studies University Zhejiang University	Philippine	Silliman University
		Saudi Arabia	Royal Embassy of Saudi Arabia
		Thailand	Burapha University Chiang Mai University
		Uzbekistan	Tashkent Pediatric Medical Institute Tashkent State Pedagogical University Named After Nizami
		Vietnam	Hanoi Polytechnic College Hanoi University of Culture University of Economics, The University Of Danang Vietnam National Institute of Culture and Arts Studies
		Oceania	
		Australia	Griffith University RMIT University (Royal Melbourne Institute of Technology)
		New Zealand	Ara Institute of Canterbury The University of Auckland University of Otago University of Waikato
		North America	
		Canada	McGill University School of Continuing Studies Vancouver Island University University of British Columbia University of Montreal
		Dominican Republic	Universidad Tecnológica de Santiago
		Guatemala	American University of Antigua
		Mexico	Universidad Autonoma de Baja California University of Colima
		Puerto Rico	Inter American University of Puerto Rico
		U.S.A.	Angelo State University Augsburg University Boston University California State University, Fresno California State University, Fullerton California State University, Monterey Bay California State University, Northridge Concordia University, Irvine CUNY Lehman College Huntington University Mary Baldwin University Michigan State University New York University Steinhardt School North Park University Northern Illinois University Presbyterian College Saint Mary-of-the-Woods College Sierra States University Texas A&M International University The University of New Mexico UCLA Extension American Language Center University of California, Irvine (UCI Extension) University of Central Missouri University of Hawaii at Hilo University of Hawaii at Manoa University of Houston University of Idaho University of Mary Washington University of Minnesota University of Mississippi University of Oregon University of Pennsylvania English Language Programs University of Wisconsin River Falls Utah State University
		South America	
		Brazil	Universidade de Sao Paulo
		Chile	Universidad de la Frontera Universidad Católica del Maule
		Colombia	Pontificia Universidad Javeriana
		Uruguay	Catholic University of Uruguay
		Venezuela	Fundación del Estado del Sistema Nacional de las Orquestas Juveniles e Infantiles de Venezuela(Fesnojiv)
China(Hong Kong)	The University of Hong Kong		
China(ROC)	Chinese Culture University Feng Chia University Fujen Catholic University National Chung Cheng University National Quemoy University National Taiwan Normal University National University of Kaohsiung Shih Chien University Shu-Te University Soochow University Tainan National University of The Arts Taipei National University of the Arts Tamkang University		
India	Manipal Academy of Higher Education University of Hyderabad		
Indonesia	Universitas Gadjah Mada University of Indonesia		
Iran	University of Mazandaran		
Israel	Jerusalem Rubin Academy		
Japan	Beppu University Bunkyo University Chiba University Dokkyo University Doshisha University Doshisha Women's College Gakushuin Women's University Hosei University J.F.Oberlin University Joshi University of Art and Design Kagawa University Kanagawa University Kanda University of International Studies Kansai University Konan Women's University Kyoto Women's University Seinan Gakuin University Sendai Shirayuri Women's College Showa Women's University Tokyo Woman's Christian University Tsukuba Gakuin University		
Kazakhstan	Al-Farabi Kazakh National University Kurmangazy Kazakh National Conservatory Kazakh State Women's Teacher Training University		
Laos	National University of Laos		
Malaysia	Management & Science University University of Malaya Universiti Teknologi Malaysia		
Mongolia	Ulaanbaatar University		

INCOMING PROGRAMS

EXCHANGE / VISITING STUDENTS

Period of Study : One semester or a year

- Full academic year: March ~ December / September ~ June
- Spring semester: March ~ June(15 weeks)
- Fall Semester: September ~ December(15 weeks)

Qualification

Any student (male/female) who meet the qualifications listed below can apply for Exchange / Visiting student Program

- Nomination letter by Applicant's Home University
- Undergraduate students must have completed at least two semesters (Graduate students must have completed at least one semester) at their home university
- Language Proficiency in either Korean or English Language (Submission of Official scores is not mandatory) * Courses that can be taken are subject to change depends on the Language Proficiency(Above TOPIK Level 3 or TOEFL iBT 71 Recommended)



Nomination & Application Deadline

- Nomination(via university offices) : By November 1 for the Spring semester and May 1 for the Fall semester
- Application (via online): By November 30 for the Spring semester and May 31 for the Fall semester

Tuition Fee

- Exchange Students : If your university has a mutual exchange partnership with us then you may be eligible for a tuition waiver.
- Visiting students(Study Abroad) : Students pay tuition fees to both the home university and the host university.

Course Offerings

We offer approximately 100 courses in English per semester throughout various departments. International Students are allowed to take courses from different departments upon availability. The most up-to-date course list becomes available a month prior to the beginning of semester.

Credit Acquirement

- Undergraduate : Up to 19 credits per semester
- Graduate : Up to 9 credits(Master's Degree) / 12 credits(Doctoral degree)
- * Major courses are 3 credits and electives are 2-3 credits in general (1 credit=15 hours).

Designing a Course plan (Recommended Course Combinations)

Class Choices		
Case 1	Courses taught in English Only	If you are fluent in English
Case 2	Courses taught in Korean Only	If you are fluent in Korean
Case 3	Combine Courses taught in English and Korean	If you are fluent in both Korean & English
Case 4	Combine Courses taught in Korean & *Korean Language and culture electives	* Korean Language and Culture classes are offered only for international students by levels (Students can register up to 2 courses)
Case 5	Combine Courses taught in English & *Korean Language and culture electives	

Korean Language Classes offered by Institute for Sungshin International Education(SIIE)

- If exchange / visiting students want to take Korean Language Classes at SIIE, they can choose one of the following options

Option	Enrollment status		Tuition fee
	Undergraduate	Graduate	
1	9 credits or less	3 credits or less	Free of Charge
2	10 credits or more	4 credits or more	50% off from the original fee will be charged Original fee : 1,300,000 KRW 50% discount fee : 650,000 KRW

SHORT-TERM PROGRAM

SUNGSHIN UNIVERSITY INTERNATIONAL CAMP(SUIC)

About SUIC

SUIC offers the students around the world an opportunity to explore a variety of aspects of Korean Culture and learn Korean language in a highly structured way in a short time.

Program Schedule : During July

Session	Period	Program Fee
Session 1 or Session 2	July / 8 days and 7 nights	750,000 KRW
Session 1 + Session 2	July / 15 days and 14 nights	1,200,000 KRW



*Program is subject to change every year

- Included : Tuition Fee, Textbooks, Housing, Breakfast and Lunch (Mon-Fri)
- Excluded : Flight, Visa, Insurance Fee, Meals (Weekend and Dinner for Mon-Fri), Personal Expense (Transportation included)

Program Structure and Description

Session I <Korean Language and Korean Tradition>

Session II <Korean Popular Culture>

Session I focuses on learning of Korean Language and traditional Korean Culture and II focuses on learning of Korean Popular Culture, K-Fashion Trend, K-Beauty, and K-Pop.

* Sample schedule

	Day 1	Day2	Day 3	Day 4	Day 5	Day 6	Day 7	Day 8
Session I	Arrival	OT	Korean Class	Korean Class	Free Time	Field Trip	Korean Class	Departure
		Korean Language						
		Cooking Class	Korean Traditional Dress & Tea Ceremony	K-Pop Theme Park			Farewell	
Session II	Arrival	OT	Korean Fashion Trend	K-Beauty Company Visit	Kimchi Making Class	Free Time	Farewell Ceremony	Departure
		Korean Make-Up	K-Pop Dance		Field Trip			

ASIAN WOMEN'S LEADERSHIP PROGRAM

About Asian Women's Leadership Program

Asian Women's Leadership Program is a Trilateral Consortium program of 3 Universities from Korea, China and Japan offering English curriculum on Women's Leadership and mobility from Seoul to Shanghai and Tokyo for all participants.

Program Schedule : 30 days during the Summer Break

Total of 30 participants(10/university) visit all 3 countries over the course of 3 weeks and spend 7 days at each of the 3 campuses.

※ Sungshin may be able to offer students from partner universities the possibility of participating in the 7 days- Korea portion of the program upon request.

* Sample schedule

Week 1	Day 1	Day2	Day 3	Day 4	Day 5	Day 6	Day 7	Day 8
Program in Korea	Arrival & Welcome Ceremony/OT	Lecture	Making Bibimbap	1-Day Trip (Planned by participating students)	Lecture	Visit DMZ (Demilitarized Zone)	Farewell Ceremony	Departure
		Korean Traditional Dress & Tea Ceremony	Lecture		Visit Korean Corporate Company		Free Time	
Week 2	Program in China							
Week 3	Program in Japan							



KOREAN LANGUAGE CENTER

Classification	Regular Course	Short Term Course for TOPIK
Semester	Spring, Summer, Fall, Winter	Summer, Winter
Level	Level 1 ~ 6	Level 3 ~ 5
Prescribed number of students by Class	10~15 students	More than 10 students
Class hours	Mon-Fri 09:00~13:00 (Total 200 hours)	2-3 weeks before test
Text	Korean Textbook published by Seoul National University [Purchased separately]	TOPIK (Test of Proficiency in Korean) Textbook [Purchased separately]
Cultural experience	1- 2 times a semester	-
Tuition	1,300,000 KRW a semester	Depends on number of students
Application Fee	60,000 KRW for admission	-
Remarks	Freshmen must register at least 2 semesters Applicants from the countries listed in a separate notice must register 4 semesters and stay in the dormitory for 1 year.	The course might be canceled if the number of applicants fails to meet the minimum required

• Academic Schedule (2019~2020)

Semester	Class Period	Application Period		Placement Test	
		Overseas residents	Domestic residents		
2019	Spring	2019.03.11.~ 05.17.	2018.11.30.~ 2019.01.11.	2019.01.14.~ 02.15.	2019.03.06.
	Summer	06.10.~ 08.16.	03.04.~ 04.05.	04.08.~ 05.10.	06.04.
	Fall	09.16.~ 11.22.	05.27.~ 07.05.	07.15.~ 08.16.	09.10.
	Winter	12.09.~ 2020.02.14.	09.02.~ 10.04.	10.07.~ 11.15.	12.04.
2020	Spring	2020.03.16.~ 05.22.	2019.12.02.~ 2020.01.10.	2020.01.13.~ 02.14.	2020.03.10.
	Summer	06.15.~ 08.21.	02.17.~ 04.10.	04.13.~ 05.29.	06.10.
	Fall	09.14.~ 11.20.	06.05.~ 07.10.	07.13.~ 08.14.	09.08.
	Winter	12.07.~ 2021.02.10.	08.31.~ 09.25.	10.12.~ 11.06.	12.01.

※ The above schedule is subject to change depending on whether the school deems it necessary



KOREA-CHINA JOINT DUAL DEGREE PROGRAM FOR K-FASHION AND K-BEAUTY WITH PARTNER UNIVERSITIES IN CHINA

Background

To improve the quality of higher education in China and to expand on the education curriculum and teaching methods from overseas universities, the Chinese Ministry of Education has evaluated and selected universities to implement the “Joint Dual Degree Program.”



Purpose

To export and provide excellent education curriculum in K-fashion (Department of Fashion Industry) and K-beauty (Department of Beauty Industry) to students in China and to promote Sungshin Women’s University as study destination for specialized programs.



Program Details

Partner University	Hebei University of Science and Technology(HUST)	Shandong Youth University of Political Science(SYUPS)
Dual Degree major	Fashion Design(4-year study)	Make-up Design(3-year Study)
Recruitment number of students	100	100
Start year	September 2013	September 2013
Structure	Two-year study at HUST Two-year study at Sungshin	Two-year at SYUPS Two-year at Sungshin
Degree	Dual Degree – Students will be granted Degree by both Universities	Associate Degree will be granted by SYUPS and Bachelor’s Degree will be granted by Sungshin Women’s University

Taking Korean Language classes is mandatory for students starting first year of studies and at least one third of the major courses are taught by Korean instructors from Sungshin Women’s University

OFFICE OF INTERNATIONAL AFFAIRS



INTERNATIONAL STUDENTS ADMISSION



Admission	Office	Contact
Undergraduate Admission	Office of Admissions	Tel: 82-2-920-7712
		enter@sungshin.ac.kr
		http://ipsi.sungshin.ac.kr
Graduate School Admission	Graduate School	Tel: 82-2-920-7058
		gras@sungshin.ac.kr
		http://www.sungshin.ac.kr/gras
Exchange / Visiting Students Admission	International Affairs Team	Tel: 82-2-920-7573
		international@sungshin.ac.kr
		http://www2.sungshin.ac.kr/int/index.do
Korean Language Program Admission	Institute of International Education	02-920-7757, 7789
		lang@sungshin.ac.kr
		http://www.sungshin.ac.kr/slc

INTERNATIONAL STUDENTS SUPPORT PROGRAMS



Sungshin Women's University received the accreditation "International Education Quality Assurance System[IEQAS]" by the Korean Ministry of Education for its ongoing efforts in promoting global programs and improving the education and benefits for international students.



SUNGSHIN GLOBAL FRIENDS(BUDDY) PROGRAM

The Buddy Program is an opportunity to promote cultural exchange and international understanding. International students will be matched with local students at the beginning of the semester and they are encouraged to meet to exchange information, participate in any clubs or activities they choose. In addition, Sungshin Buddies will assist the international students with course registration, dormitory life, adjusting to campus life, help with Korean language, as well as providing other various support and assistance.

SUNGSHIN GLOBAL FRIENDS(TUTORING) PROGRAM

- One on one tutoring session, or students can form into groups of two or three
- Tutor will provide the tutee with studies on foreign language. (1~3 hours/day, 10 times/semester)



VARIOUS CULTURE PROGRAMS AND EDUCATION FOR INTERNATIONAL STUDENTS

- Culture Experience Programs : Each semester, students will be provided with opportunities to experience and learn Korean culture (i.e. activities, field trips, crafts; etc.)
- Education : In order to ensure the safety and successful study abroad experience at Sungshin, various education and training will be provided to international students. (i.e. immigration laws, job placement for international students, computer training, fire safety education, crime prevention education ; etc.)



TOPIK EXAM FEE AID

- In order to help improve the Korean language proficiency of international students, the fees for the TOPIK exam will be covered once per year for each student.



FREE HEALTH SCREENING

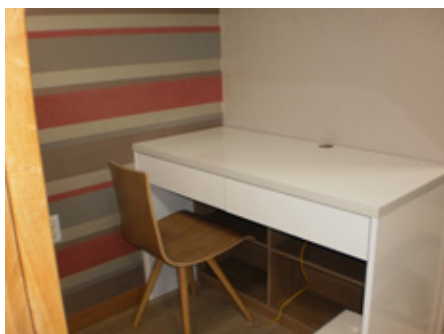
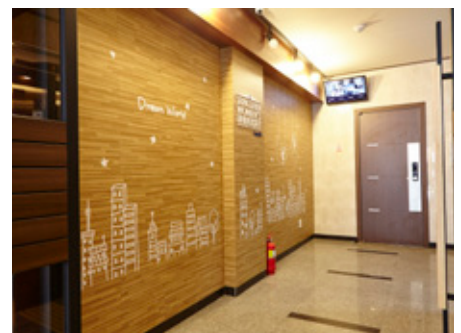
- Free health screening is available once per year for all international students.
 - Examination Areas : internal medicine, physical measurements, blood pressure, vision & hearing, X-ray, Hepatitis B, liver, cholesterol, hemoglobin, blood sugar, urine, thyroid, kidney
- ※ This may change each year.

HOUSING(DORMITORY)

- Dormitories are managed by the university staff to ensure cleanliness and safety.
- Housing available for International Students (Approx. 5 min. away from main campus)

Approximate Monthly Cost *Fees subject to change every semester	Double or Triple Occupancy Units	350,000 KRW
	Quadruple Occupancy Units	300,000 KRW
AMENITIES	Wi-fi, Desk, Closet, Bed, Air conditioner, Kitchen(Refrigerator, Electric Stove, Microwave), Washing Machine	
ADDITIONAL INFORMATION	* 150,000 KRW (Deposit returned upon move-out)	
	* Rooms are assigned by the International Student Services Team	

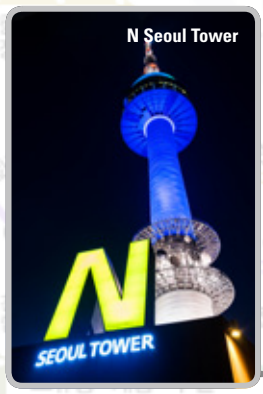
* Above information may be subject to change every semester



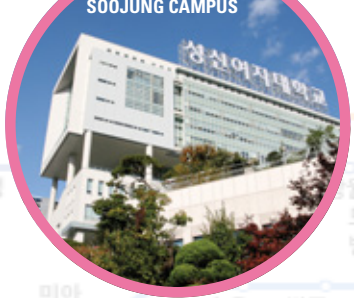
CAMPUS ACCESS



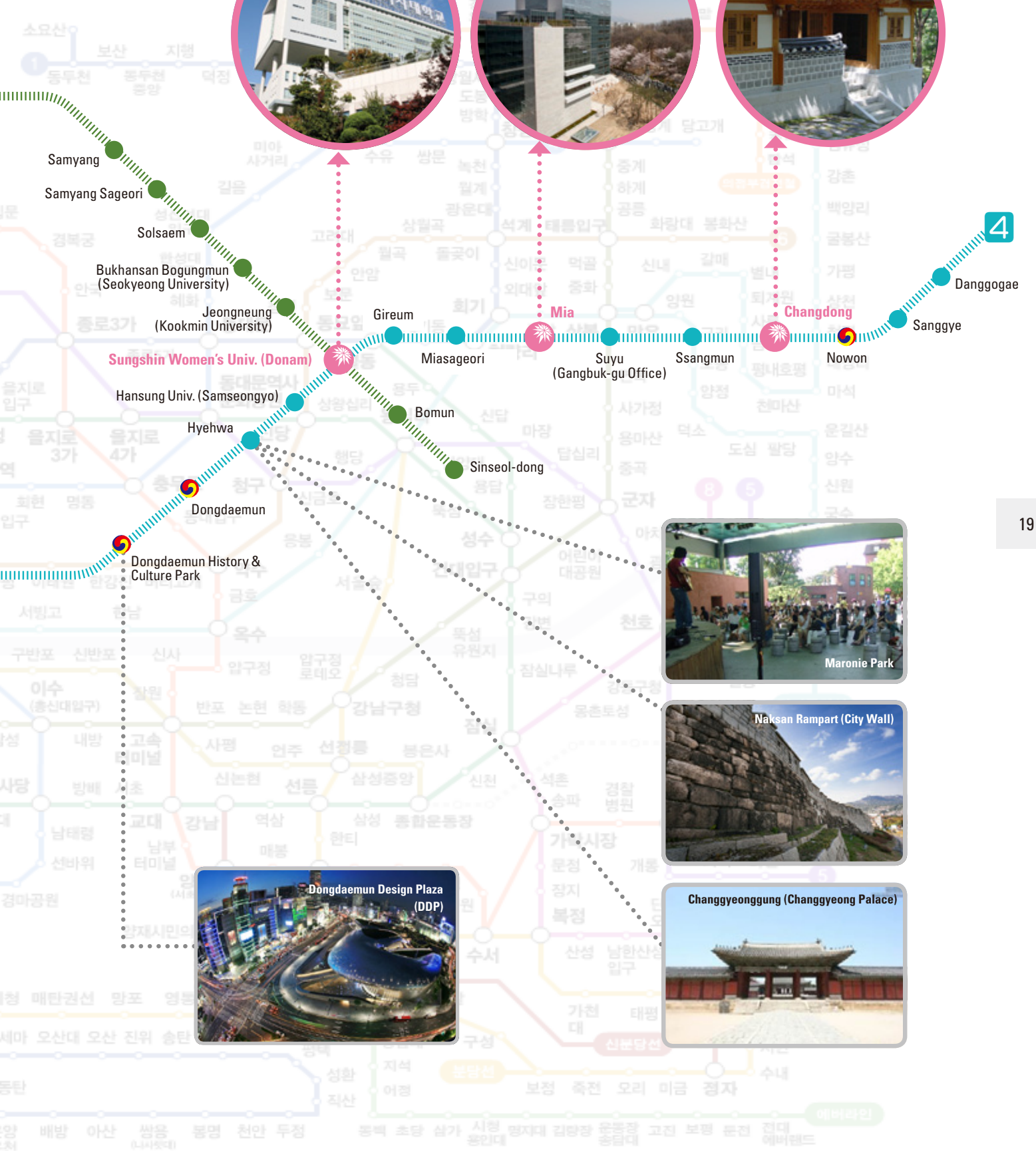
- You can easily access Subway line 4, which is 5-minute walking distance from campus ("Sungshin Women's University" station for Soojung Campus, "Mia" station for Woonjung Green campus). Both campuses are 3 subway stations away from each other.
- Riding the new "Ui Rail Train" will take you to Bukhansan Mountain.



1st Campus



2nd Campus



Samyang

Samsong Sageori

Solsaem

Bukhansan Bogungmun
(Seokyeong University)

Jeongneung
(Kookmin University)

Sungshin Women's Univ. (Donam)

Hansung Univ. (Samseongyo)

Hyehwa

Dongdaemun

Dongdaemun History & Culture Park

Gireum

Miasageori

Bomun

Sinseol-dong

Mia

Suyu
(Gangbuk-gu Office)

Ssangmun

Changdong

Nowon

4

Danggogae

Sanggye



